

Quick Start Guide - Inscoper

IQS012- Rev 01

Issue Date: 23/03/2021

1 Integrated CoolLED Products:

- pE-2
- pE-300^{white}, pE-300^{ultra} & pE-340^{fura}
- pE-4000
- pE-800

2 Installation

Contact INSCOPER support staff at support@inscoper.com. They will remotely add a configuration file to your Inscoper product to properly run the CoolLED device with your overall microscopy system.

The integration process is the same for all CoolLED Illumination Systems mentioned above. Section 3 details the use of the pE-4000 as this presents the widest range of options.

3 Using a CoolLED pE-4000 Illumination System with Inscoper Software

1. Launch Inscoper Software with CoolLED pE-4000 Illumination System **switched on**.

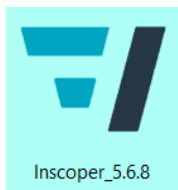


Figure 1 - Software icon

2. Launch a new project.

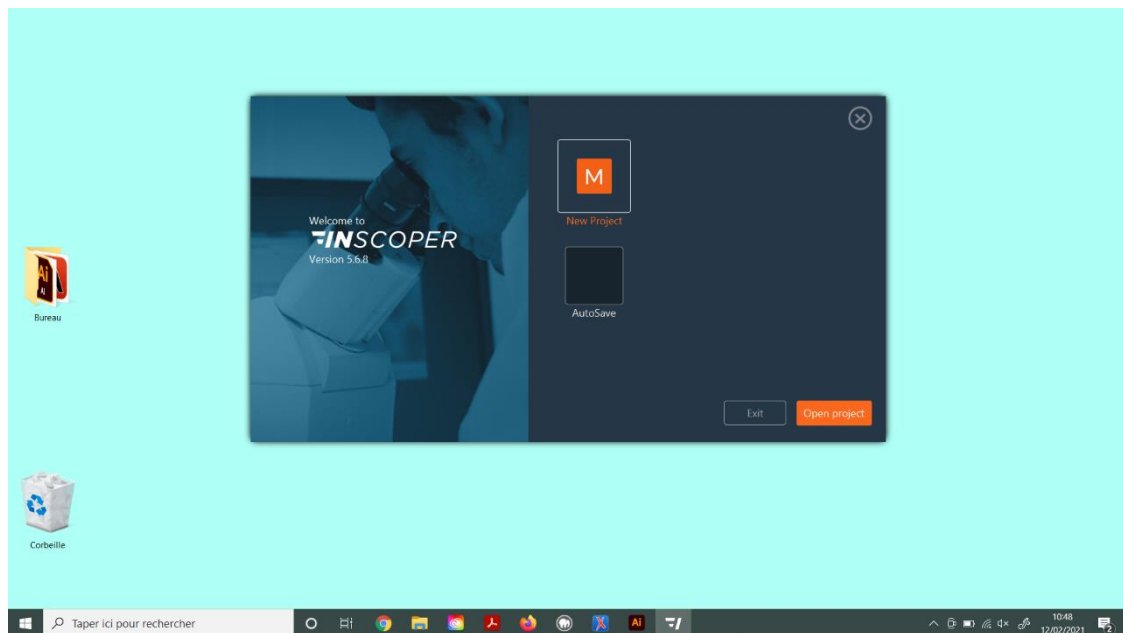


Figure 2 - Start screen with new or saved projects.

3. Configure your CoolLED Illumination System by choosing all needed channels for each line:

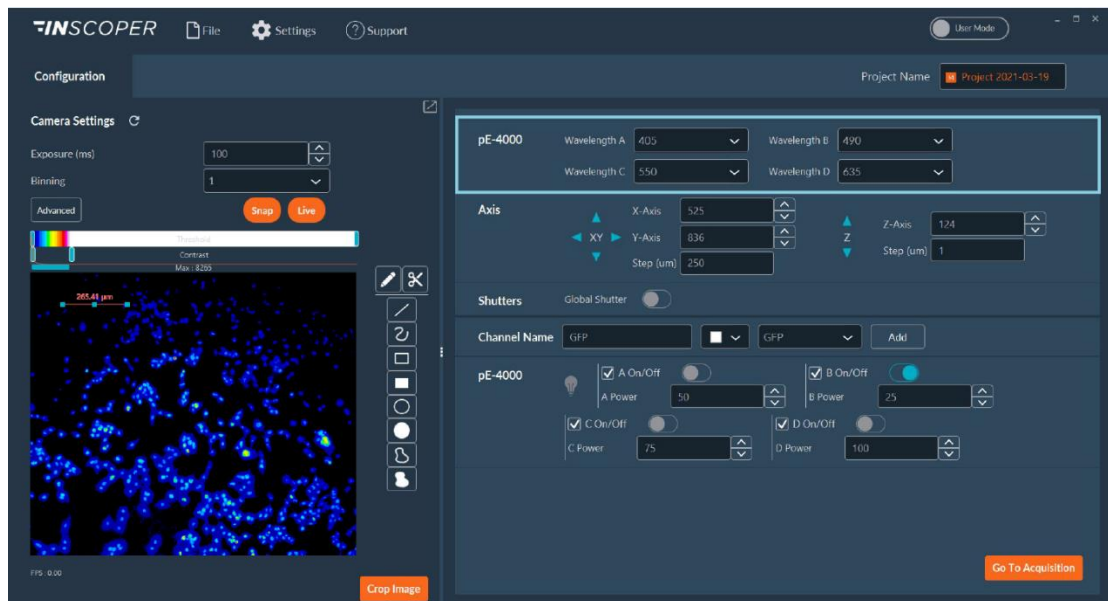


Figure 3 - Configuration Tab with all microscopy system devices including the pE-4000.

4. Adjust the desired wavelength using the drop-down lists.

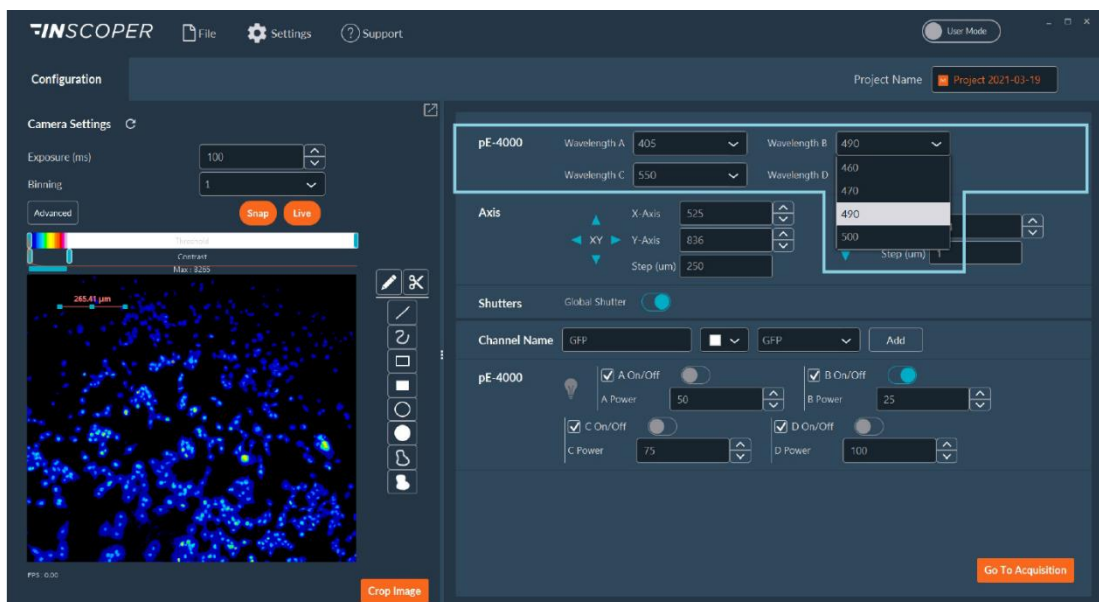


Figure 4 - Wavelength dropdown list

5. It is possible to turn each LED of the pE-4000 on or off and modulate its irradiance:

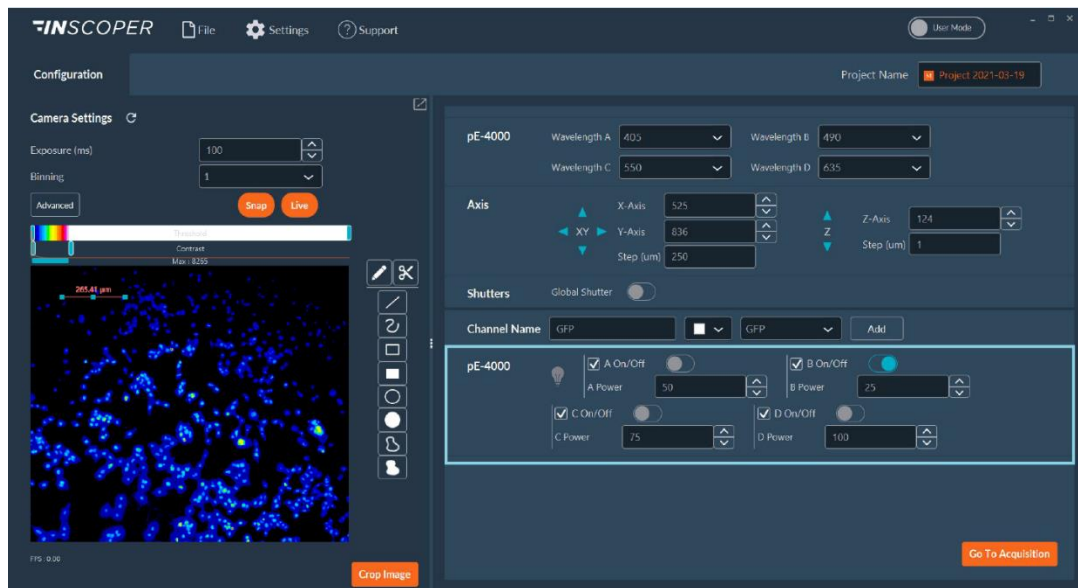


Figure 5 - LED's settings

6. It is possible to save many different configurations as illuminations for automation use during acquisitions.

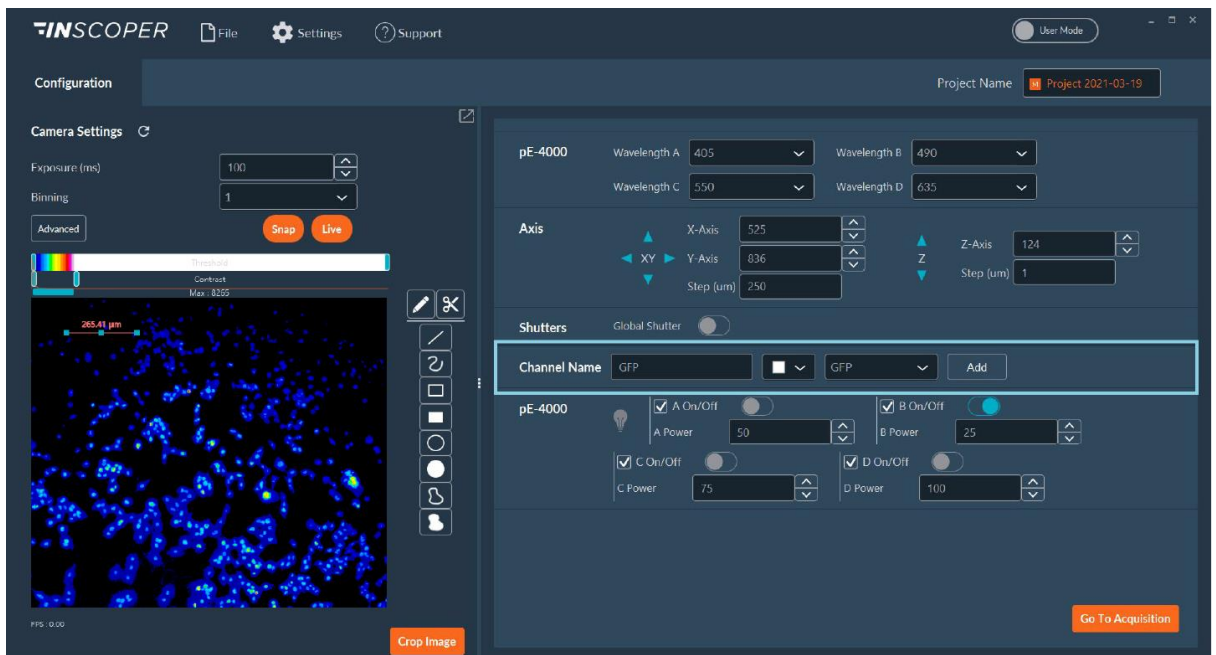
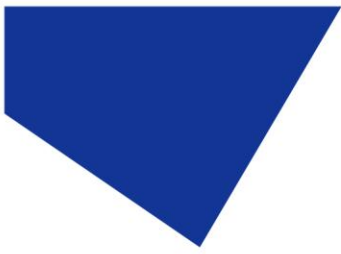


Figure 6 - Creating channel in the Configuration Tab



Example of Software Functionality: Multi-Channels Dimension

You can use the pE-4000 during acquisition via the multi-channel dimension.

1. Set and save all desired channels in the Configuration Tab.

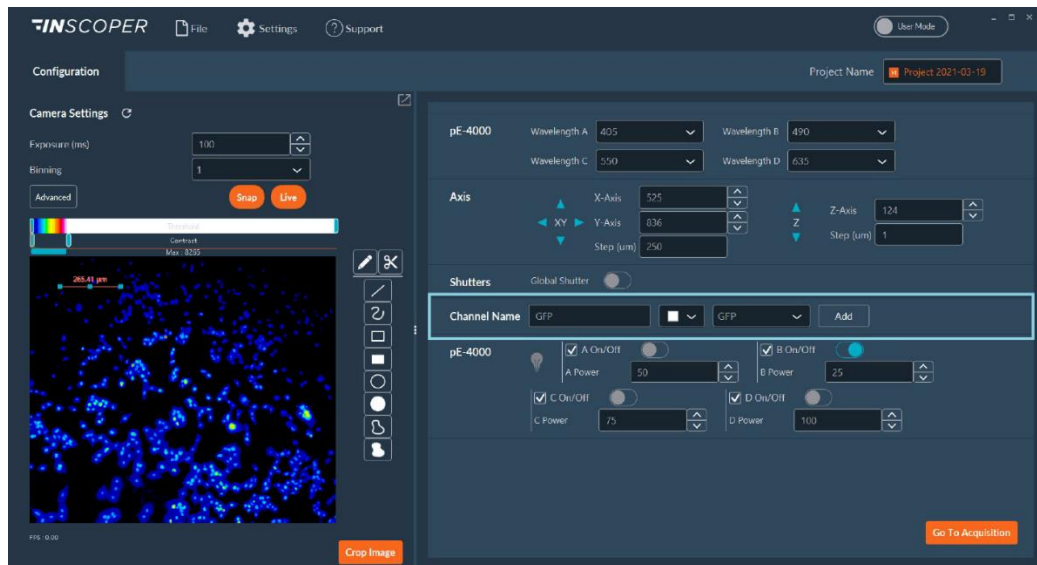


Figure 7 - Creating channel in the Configuration Tab

2. Add all desired channels from the list in Acquisition Tab.

You can adjust their irradiance, assign colours, check the Z-Stack checkbox if necessary, select whether you want the shutter to be closed between each image, choose the camera/cameras and the exposure you wish to use.

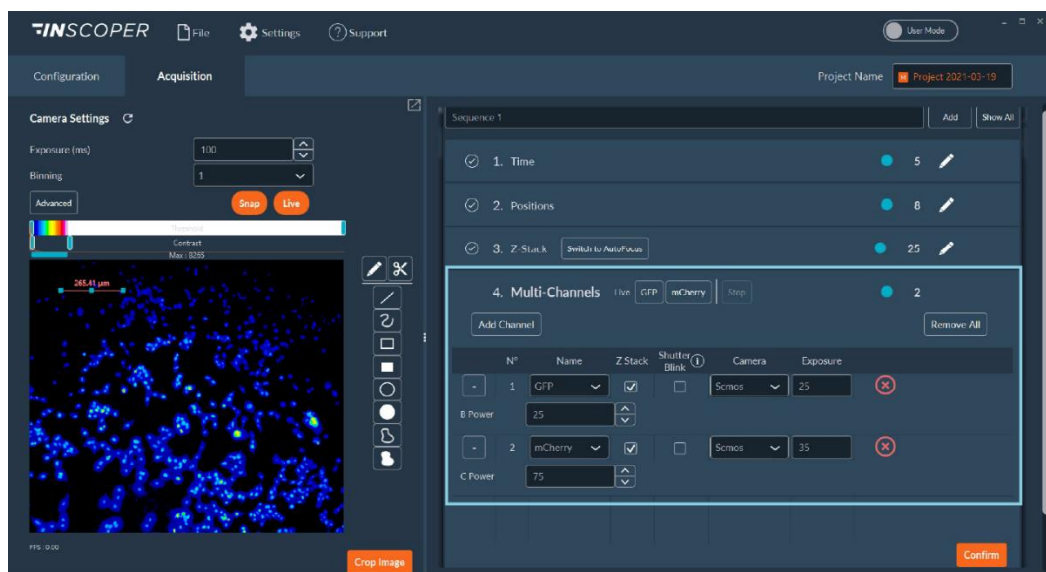


Figure 8 - Editing multi-channels Dimension in the Acquisition Tab



3. Once you have finished editing the dimension, click on **Confirm** to save your settings and **Start Acquisition** to fix your experiment.

*All acquired images could be **viewed/replayed** in the **Visualization Tab**.*