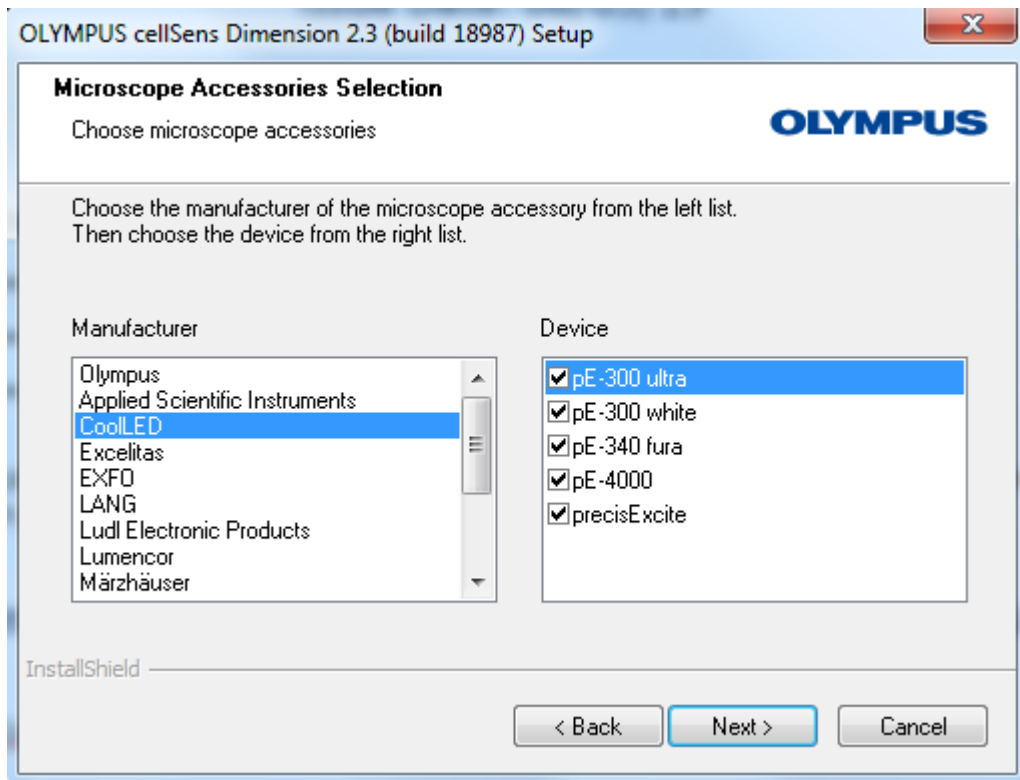
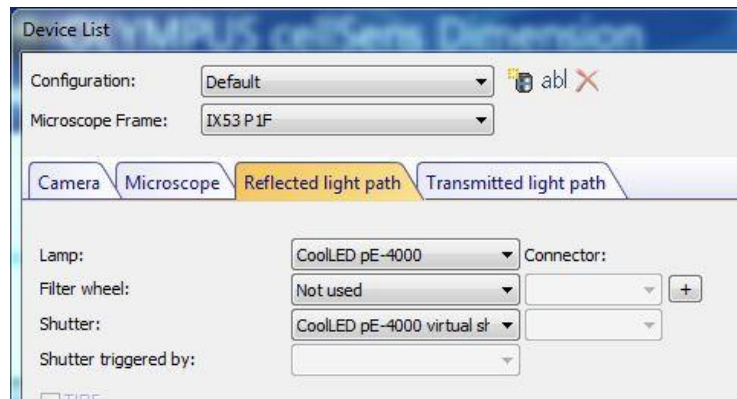
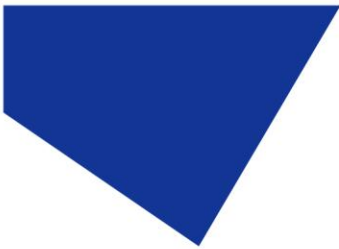




Screenshots for Olympus Cellsens Imaging Software



CoolLED devices listed in 'Microscope Accessories Selection' during setup



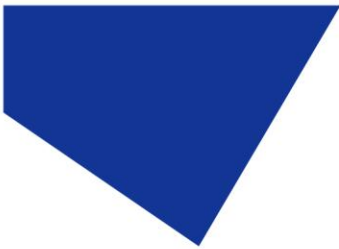
'Device List'

Interfaces

Serial Port Parallel Port Ethernet

Interface	Description	Device
COM3	CoolLED USB Virtual Serial Port A	CoolLED_pE-4000
COM4	CoolLED USB Virtual Serial Port B	Not used

Interfaces



Available components

- Fluorochromes
- Camera
- Camera Simulator
- General
 - Manual Nosepiece
 - Manual Mirror Turret
- Fluorescence/reflected
 - CoolLED pE-4000
 - CoolLED pE-4000 virtual shut

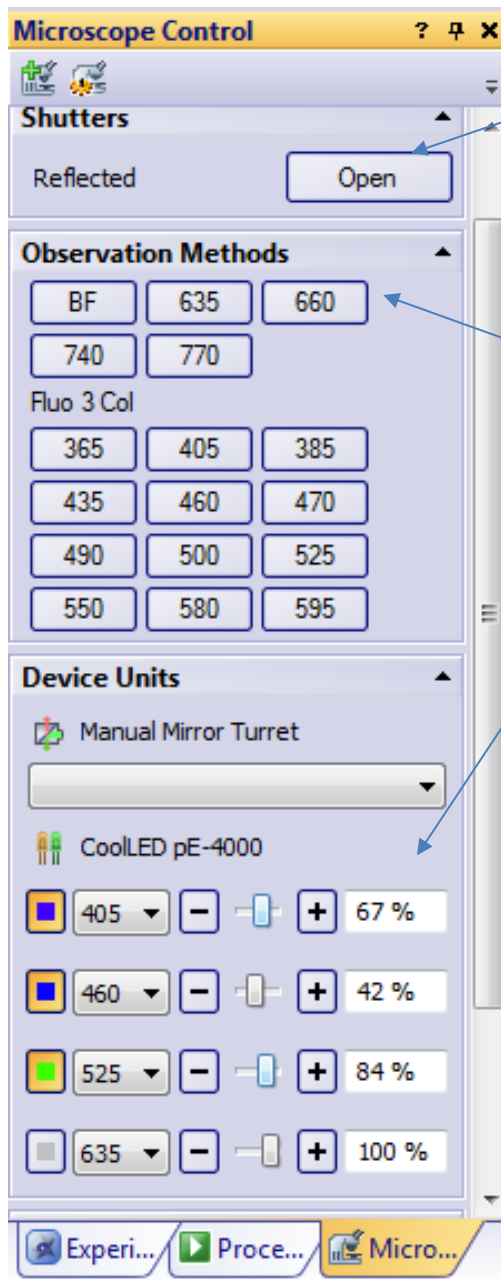
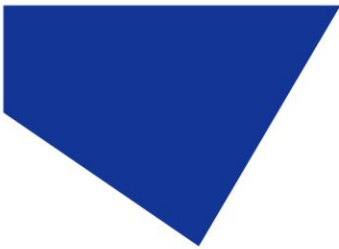
Status: Adjust

All objectives

Adjust on/off

<input checked="" type="checkbox"/>	365	-	+	100 %
<input type="checkbox"/>	460	-	+	100 %
<input type="checkbox"/>	550	-	+	100 %
<input type="checkbox"/>	635	-	+	100 %

'Device Customization

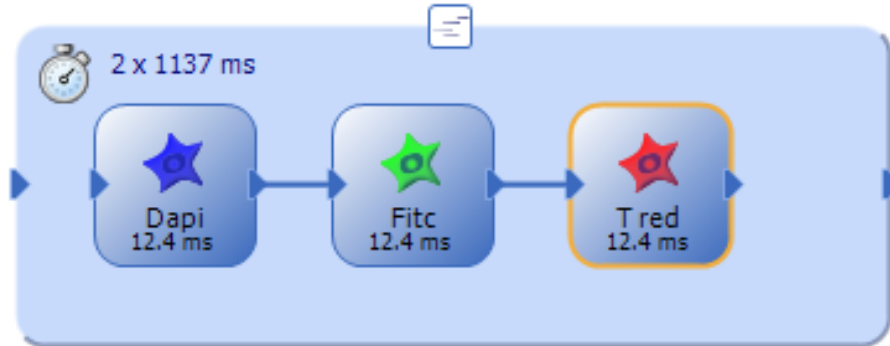
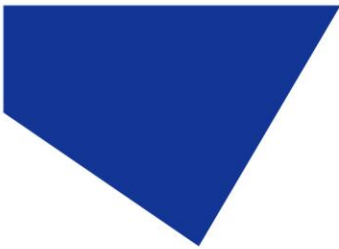


Global Shutter

Full 'Observation methods' can be set up here (This example is brightfield)

Alternatively, single wavelengths can be created here and become easily selectable.

Microscope Control



'Methods' in Experiment Manager