

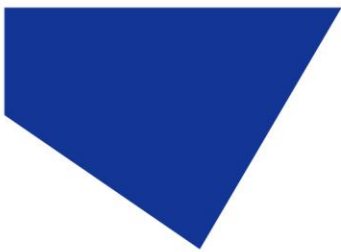
pE-340^{fura} Quick Start Guide



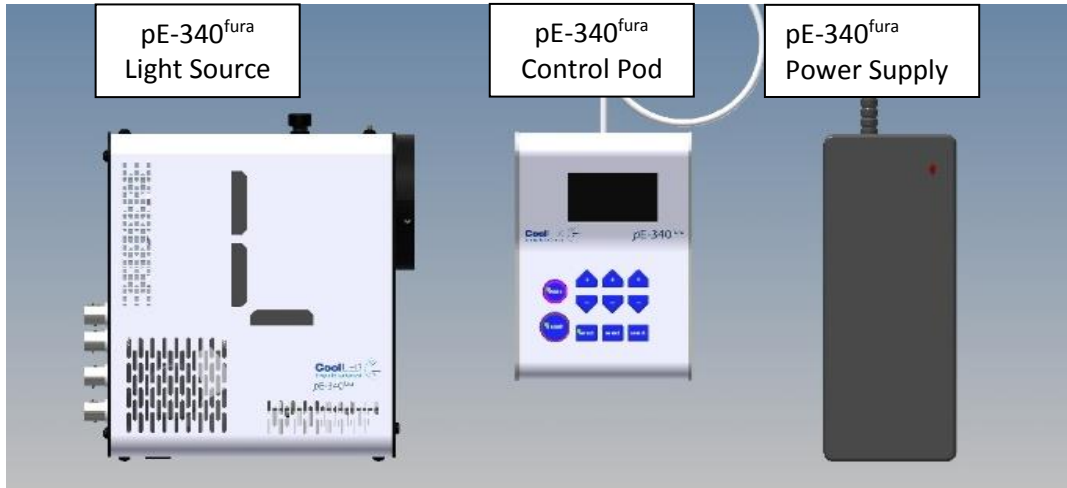
This guide should provide some basic information on the setup and operation of the CoolLED pE-340^{fura} Illumination System.

Before operating this product please read and observe the advice given in the safety section of the full User Manual.

For more detailed information on the full range of options and functions please see the full User Manual.



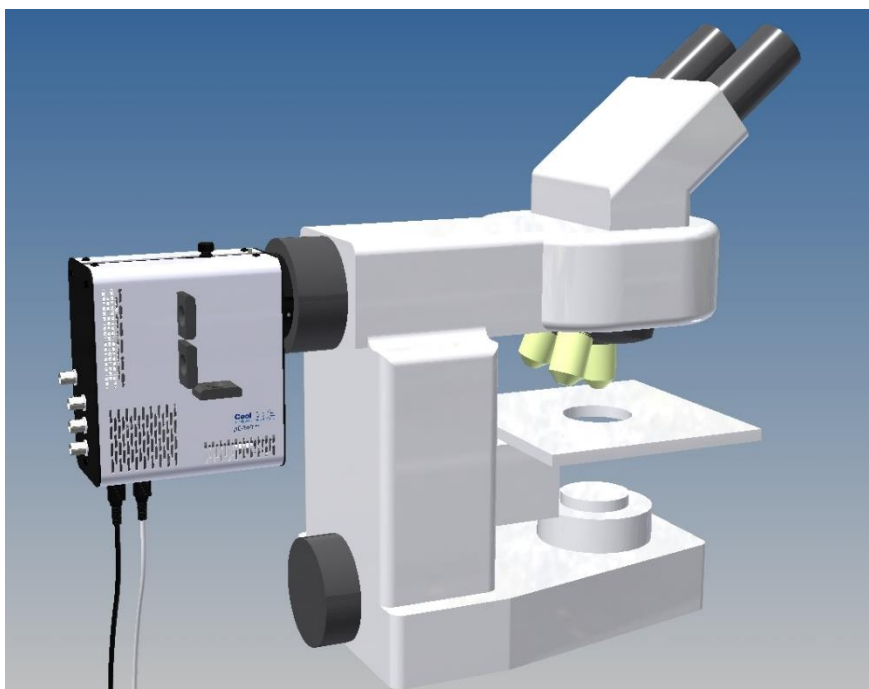
1. Contents

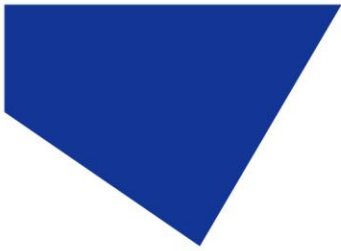


A typical pE-340^{fura} order will include the parts shown. A microscope adaptor that was specified when ordering will be fitted to the pE-340^{fura} Light Source (direct fit version). A mains power cable for the specified region of use shall also be included (not pictured).

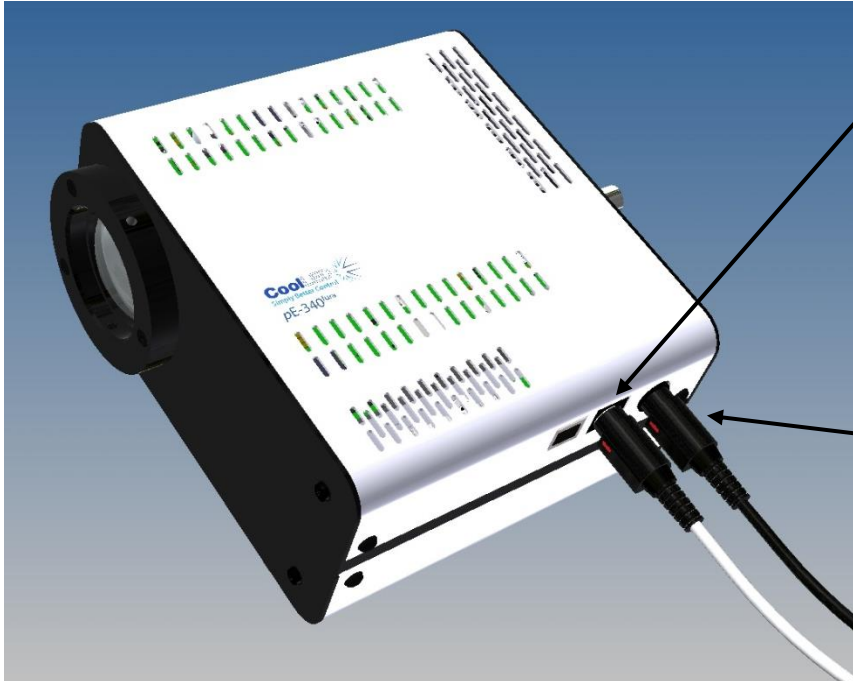
2. Fitting the Light Source to a microscope

Attach the Light Source to the port of the microscope. (The Light Source can be installed at a different orientation if required).





3. Connecting the Control Pod and power supply



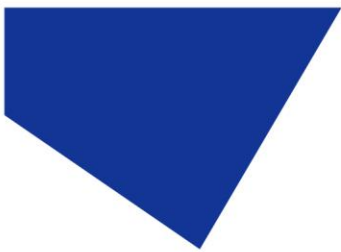
Connect the pE-340^{fura} Control Pod cable to the light source. Ensure the correct orientation of the connector by aligning the two red dots.

Insert the power supply connector into the Light Source.

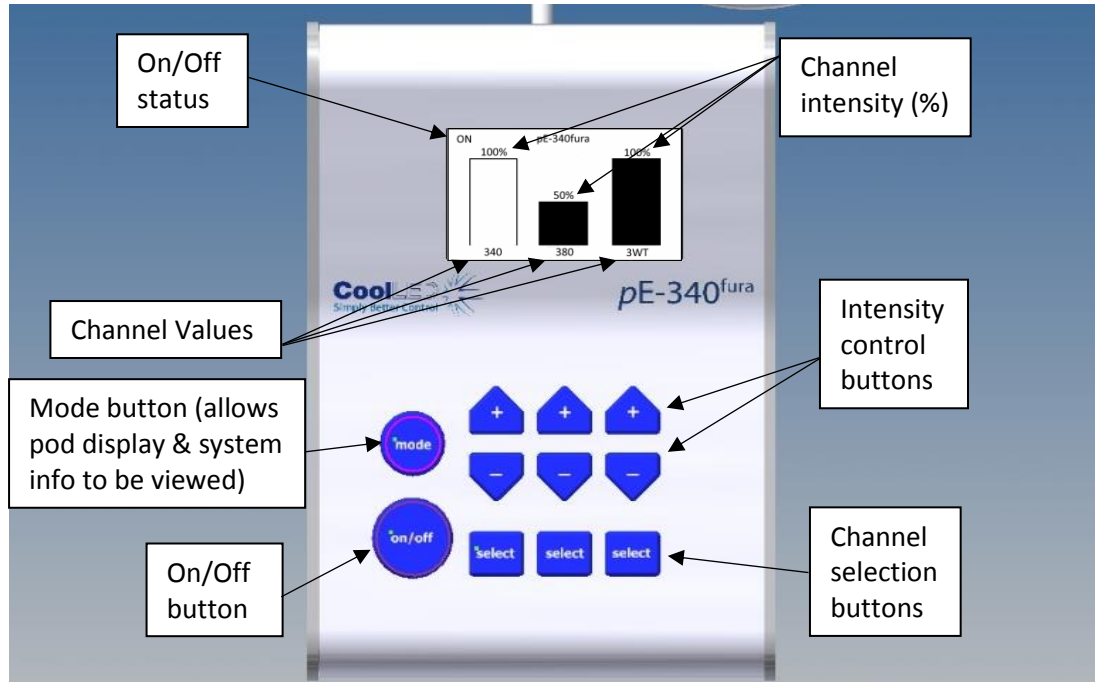


Insert the mains lead connector into the power supply.

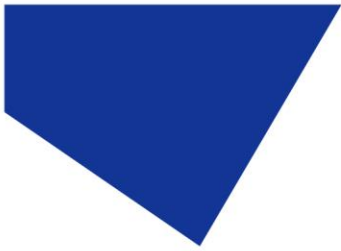
Insert the mains plug into an appropriate socket and switch on.



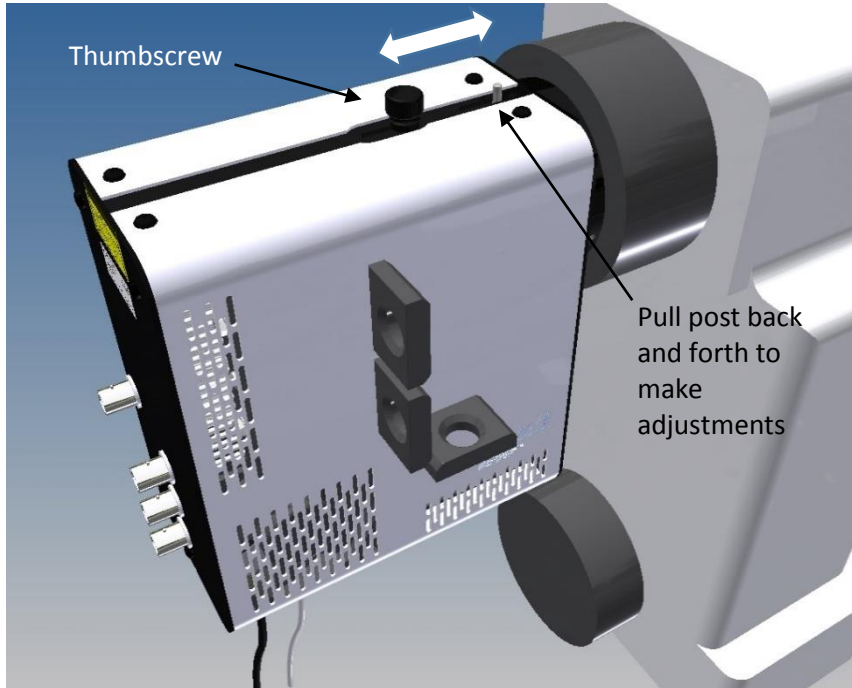
4. Control Pod operation



When the system is powered up the Light Source shall be in the “Off” state. Pressing the select buttons will allow you to select or deselect different channels. The selected state shall be indicated by a shaded intensity bar on the Control Pod display. Pressing the “On/Off” button will allow all channels in the selected state to be turned on. Channels that are in the “On” state are indicated by a solid intensity bar. The intensity control buttons allow you to increase (+) or decrease (-) the intensity of a channel.



5. Optical adjustment

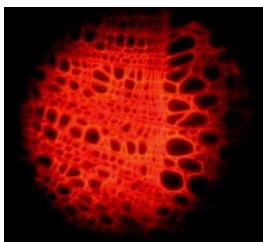


To optimize the Light Source, set up a sample that covers the entire field of view.

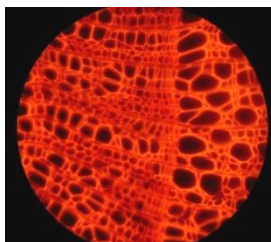
Loosen the thumbscrew and slide the adjuster back and forth whilst viewing the sample.

Once you achieve maximum brightness with an even illumination secure the position by tightening the thumbscrew.

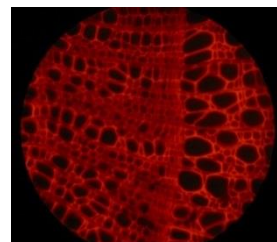
Example of the effect of the adjustment on the sample



Light Source adjustment too far in



Light Source adjustment in optimal position



Light Source adjustment too far out