



Quick Start Guide for HCImage

IQS003- Rev 02

Issue Date: 25/05/2017

1 Integrated CoolLED Products:

- pE-2
- pE-300^{white}, pE-300^{ultra} & pE-340^{fura}
- pE-4000

2 Setting up your CoolLED Illumination System COM Port via USB:

1. The CoolLED driver file should be downloaded from the CoolLED website:

<http://www.cooled.com/product-detail/imaging-software/>

N.B. This is a general driver for Windows machines and all USB controlled CoolLED Illumination Systems (pE-2, pE-300 Series & pE-4000).

2. Save the files (.inf and certification files) to a preferential location on your Computer (e.g. Desktop)
3. When the CoolLED Illumination System is plugged in, it will appear with a driver required warning (Yellow exclamation mark). Right click and 'update' the driver, pointing it to the previously downloaded directory containing the .inf file.
4. Once the CoolLED Illumination System has been successfully installed into Windows, check the Virtual COM ports assigned by going into Device Manager. The CoolLED Illumination System should be listed under 'Ports' (COM & LPT):

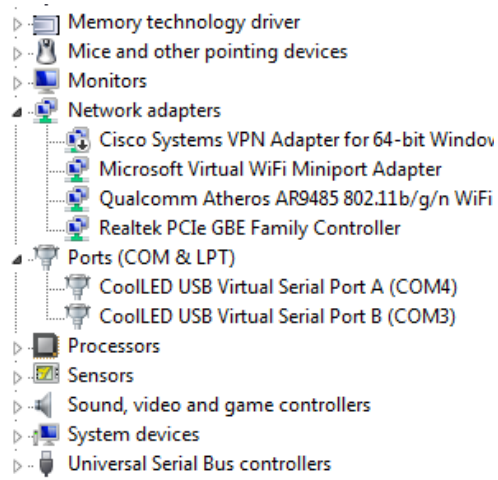


Figure 1: Device Manager with a pE-4000 installed.

Either COM port may be used for control. The creation of two COM ports is to allow for multiple uses (for example: one could be used for controlling the CoolLED Illumination System whilst the other is used for command testing). Additionally, it allows for ease of use if there is a COM port conflict.

3 Configuring a CoolLED Illumination System in HImage

1. Launch HImage
2. On the main toolbar, navigate to 'File', then select 'Current Profile'. This will bring up the below window:

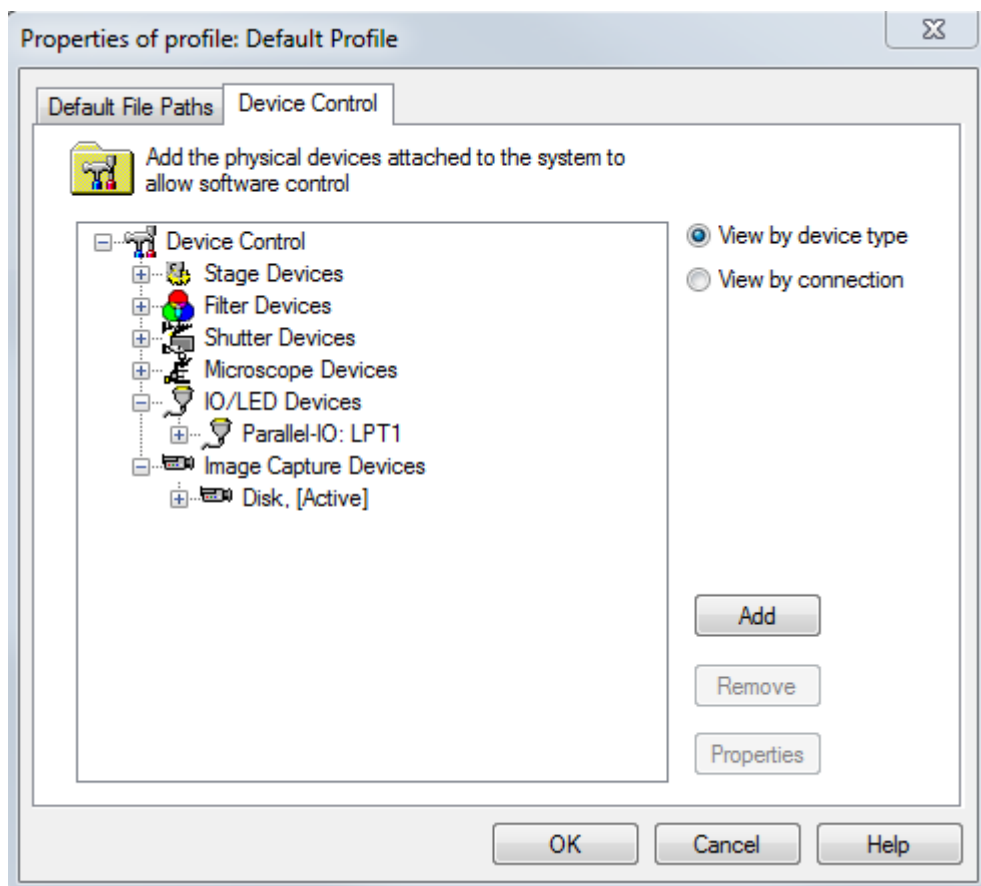


Figure 2: 'Device Control'

3. Select 'IO/LED Devices' and click 'Add'. This will bring up the 'Add IO/LED Device' window. From this window select CoolLED precisExcite in the 'Controller' Tab.

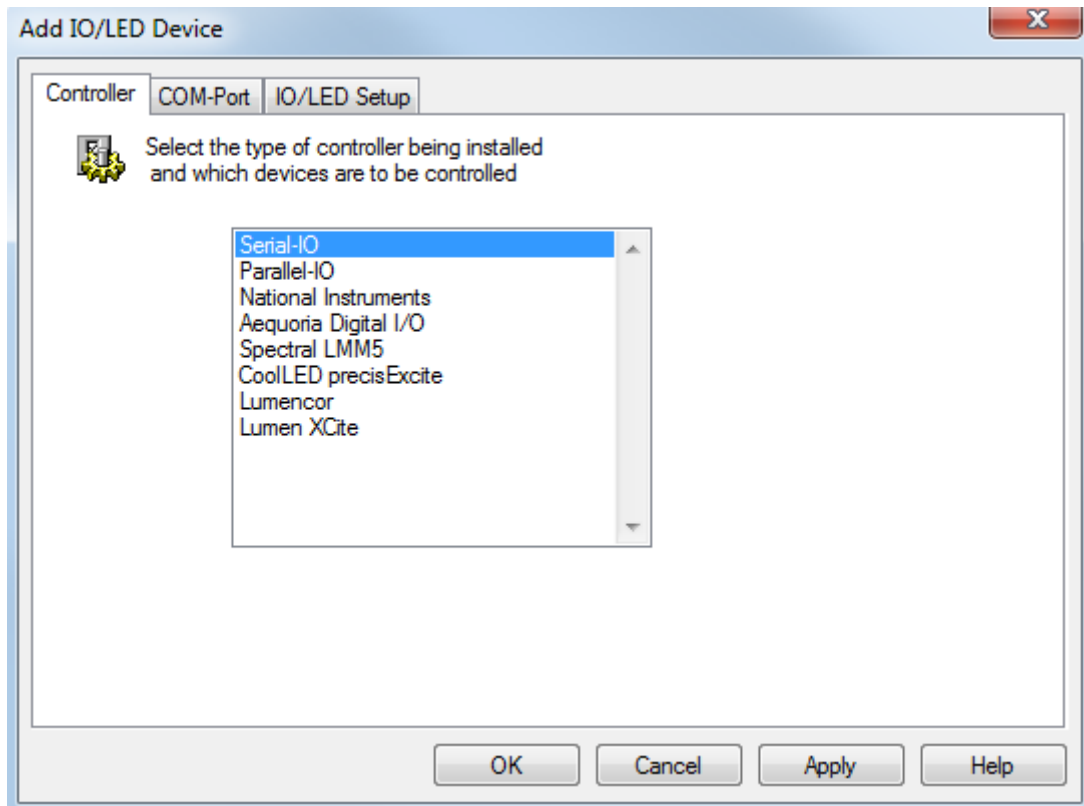
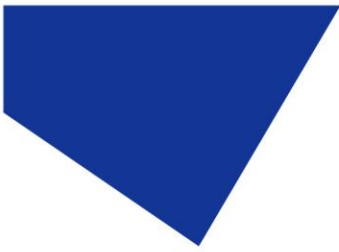


Figure 3: 'Add IO/LED Device' window

4. You will also need to navigate to the 'COM-port' tab and select the appropriate COM Port assigned to the CoolLED Illumination System in Device Manager.

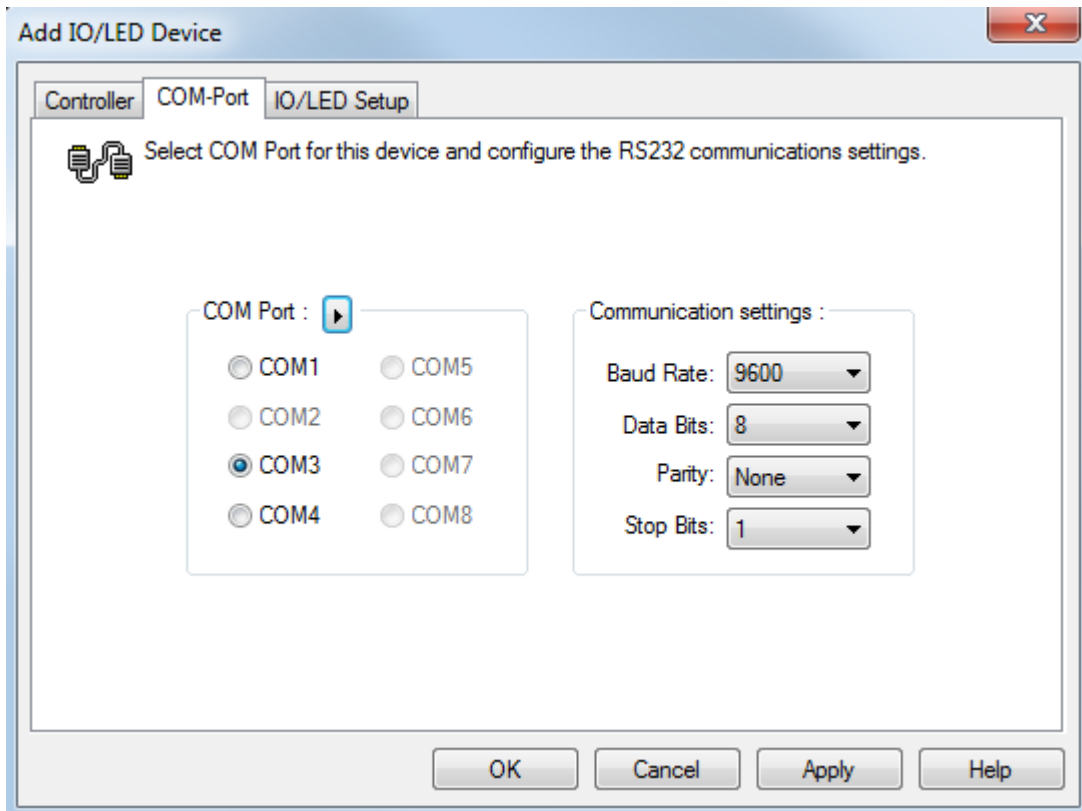


Figure 4: COM port selection in 'Add IO/LED Device' Window

5. With this completed, click OK to close the 'Add IO/LED Device' window and then initialize the pE-4000. If you get a communication error, verify communication with the CoolLED Illumination System to make sure it's connected correctly; The Control Pod should display that it is in 'Remote Mode'.

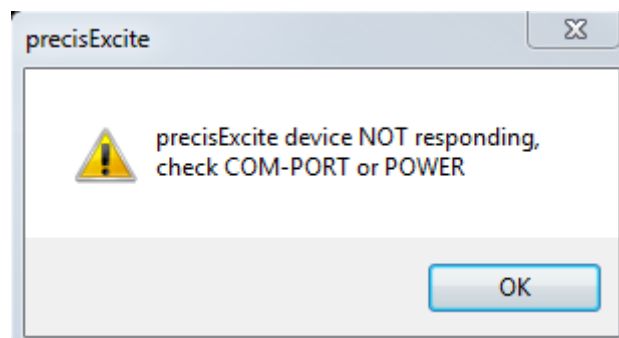


Figure 5: A pop-up that is caused by a communication error

6. Once the pE-4000 has been initialized the filter position needs to be linked to the custom name created in the 'Filter Setup section of the 'Devices' tab. (See below).

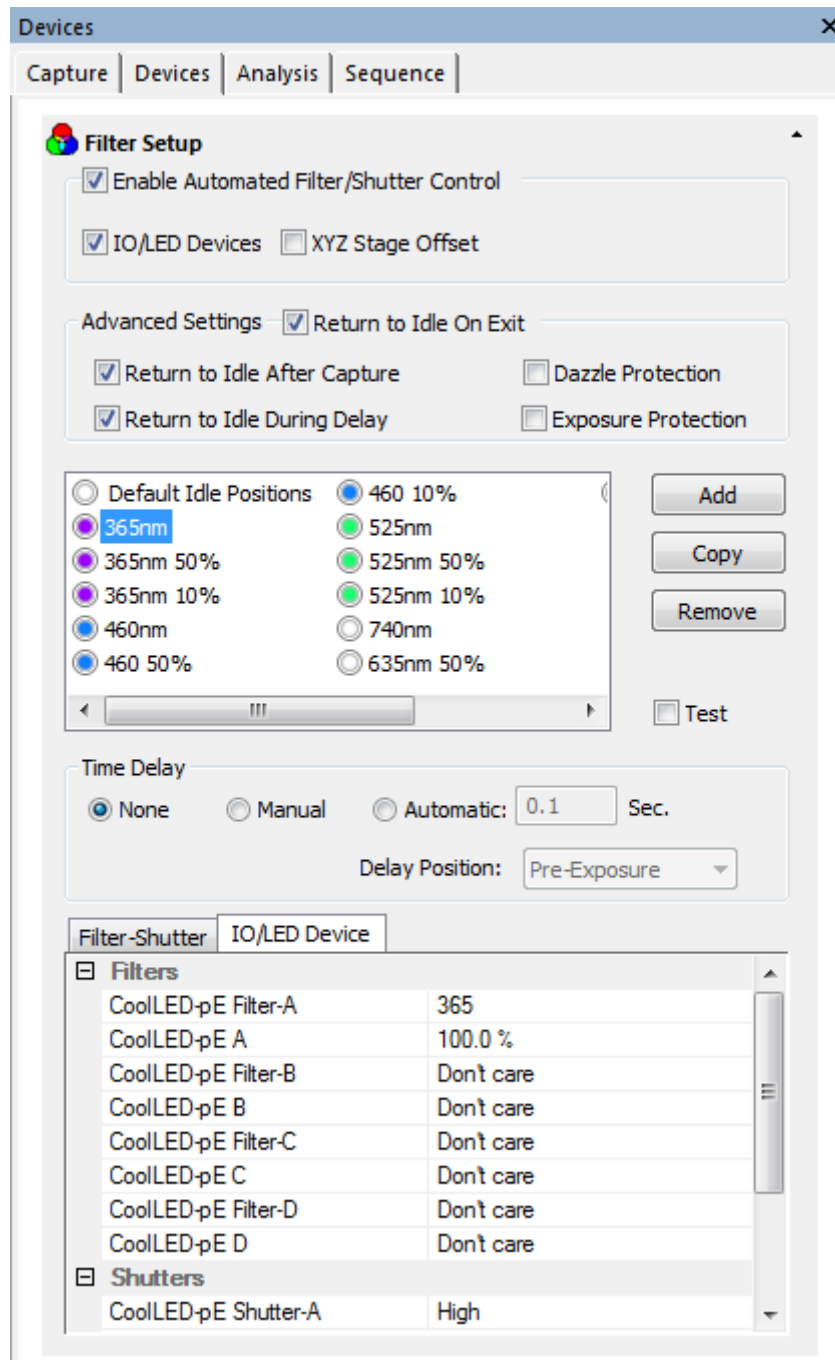
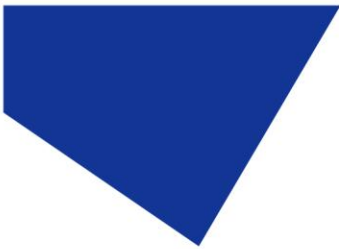


Figure 6: 'Filter Setup' within the 'Devices' window.